



**Safeture® – the best choice
to create a safer future**

Protect your most valuable assets - your employees!

Many companies still spend significantly more on the safety of their buildings and equipment than on the most valuable intellectual property - their employees.

When the unexpected happens - terrorist attacks, natural disasters or extensive political protests - it is often very difficult to find out what has really happened and close to impossible to locate employees straight away. Where are they, and more importantly, are they safe?

Safeture® helps your company and your employees to quickly take control of the situation and make informed decisions.

The Safeture platform is the best choice for companies that want to protect their employees from risks and act professionally when something happens.





“Large corporations face a tremendous task in ensuring their workers’ safety and security, and the processes today are often ineffective and cumbersome.”

Adaptable and fully prepared for future challenges

Safeture Enterprise platform gives corporations the ability to effectively automate safety and security, while seamlessly integrating the software to become a natural part of their internal processes.

The platform is a complete and cloud-based service managing risk, safety and crises processes involving employees.

Safeture Enterprise platform is easy to adapt to each company’s unique needs and fully prepared for future challenges. A platform that is becoming increasingly important when your business grows and has to respond to harder demands from authorities.

Through world-leading technology and innovative thinking, Safeture Enterprise platform enables you to protect what matters most – your employees.

Safeture Enterprise modules



Travel

Includes:

- Travel Management Company integration/GDS through Amadeus, Sabre and Travelport/Galileo
- Parsing of email booking confirmations
- Real time updates of flight status; Departure time, delays, terminal and gate information
- View travel bookings in App
- View travel bookings in Manager (Super User) Web portal



Employee (end user) web portal

The employee web portal is a web interface for employees to access security and country information using a web browser.



Manager (super user) web portal

The manager web portal is a web interface for super users to access all management functionality such as mass communication, employee positions, statistics, content management, user management etc.



Mobile app

The mobile App is a native mobile app for iPhone and Android that provides the interface and functionality for employees (End Users).



Safeture security and travel content

24/7 real-time security alerts and travel related alerts for all countries in the world plus general country security information and other valuable information about each country.



E-learning

E-Learning provides a number of courses containing educational instruction videos, texts and tests, as well as course progress.



Machine translation

All information and content are machine translated into a large number of local languages.



Custom content

The customer can prepend, append and replace all static content, as well as adding real time alerts with the ability to opt-in or opt-out of Safeture default real time alert content.



API

JSON REST API, Application Program Interface, that enables the Safeture platform to be integrated with other systems such as; Employee databases, Intranet, Other content providers etc.



SDK

SDK, Software Developer Kit, allows customer to integrated the Safeture Mobile App functionality in any other App or create a customized version of the Safeture Mobile App.



Assistance connection

Connect and integrate your or a designated 3:rd party assistance call center. The correct number is always provided to the employee and when the call is routed all personal data including current position is forwarded to the operator at the call center receiving the call.



Mass communication

The manager can use SMS mass communication, and initiate chat conversation with compatible feature phones.



Real time positioning

Provides real time positioning of employees. The positioning can be provided using privacy filters on management level of 10 km resolution or on country/region level by the employee.

Next-generation travel security

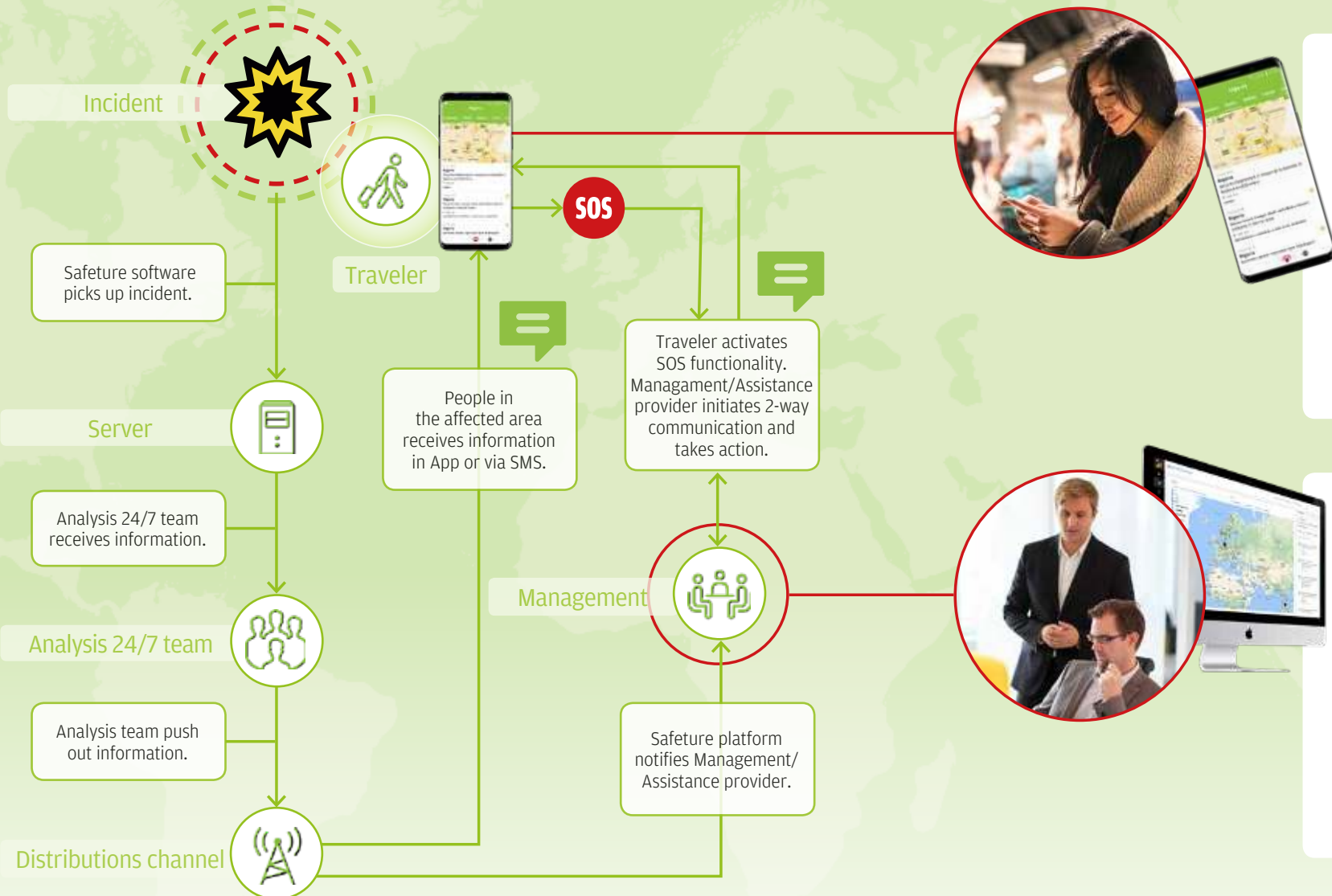
Safeture TRM is a premium travel risk management solution for corporate security teams and business travelers.

Safeture® TRM

Safeture TRM keeps travelers safe, wherever and whenever traveling and provides real-time status on warnings, alerts, security information and travel plans.

- Our team of analysts assesses all important events around the clock and compiles reliable information about what has happened.
- Through world-leading technology, Safeture identifies which people are in the vicinity of a serious event and provides relevant information via the phone about what has happened and advice on how to act.
- Safeture is well established and already helps more than 1 000 organizations and companies.
- With travel booking data, business travelers are quickly updated about any modified travel plans or delays directly on their phones.
- Studies show that staff feel safer when traveling with Safeture.

How does Safeture® TRM work?



Personal mobile app

When something big happens, it's always hard to find objective information about the situation. Through world-leading technology, Safeture ensures that people in the vicinity of a serious event are quickly informed. Our analysts assess the situation and give advice on how to act - directly via the mobile phone.

Company risk management

With the help of a web-based tool, corporate security officers immediately have access to visual overviews and effective communication.

The risk management tool presents all warnings for travelers in high-risk areas or in areas where a serious event has recently occurred.



World-leading technology and innovative solutions

Safeture offers a complete cloud-based IT platform designed to manage risk, safety, and crises involving employees wherever they are.

Through world-leading technology and innovative solutions, we help companies to protect what matters most - their employees. We enable the implementation of security processes and distribution of reliable and fast security related information to individuals and organizations.

Safeture was founded in 2009 in Sweden, and is listed on Nasdaq First North Growth Market, Stockholm.

For sales inquiries please contact: sales@safeture.com

safeture.com
